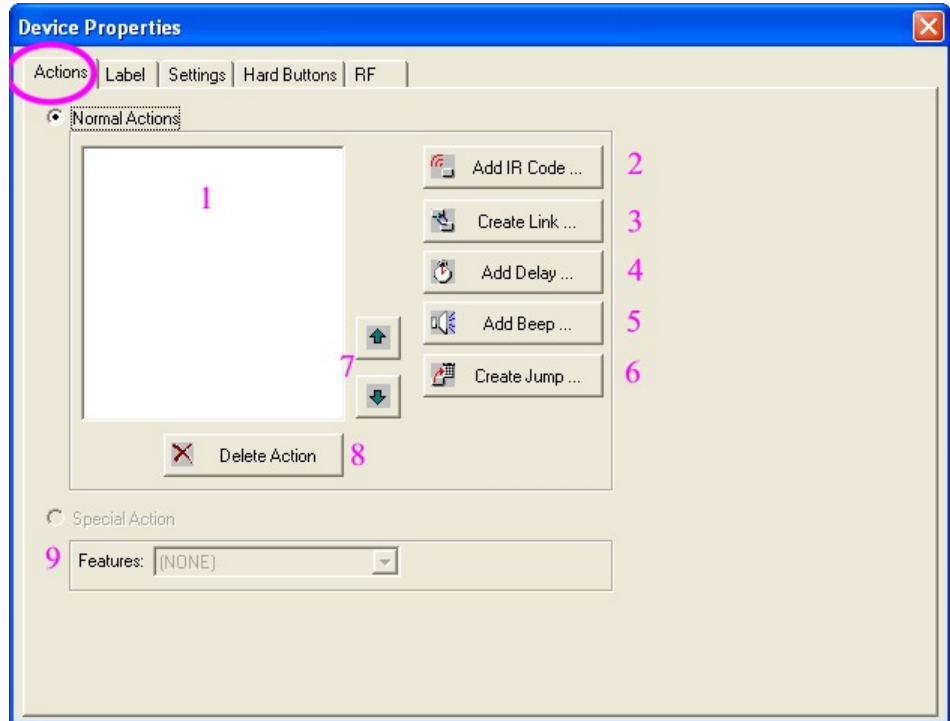







Figure 2- Device Properties with PENG



Actions Tab (See Figure 2)

This is the most active of all of the tabs. In this tab, you will:

-  “Learn” IR codes into your Pronto from your OEM remotes or choose IR codes from the built-in database of codes.
-  Create action steps or Jump to another page or Device in your configuration. (More on this later).
-  Add Delays to action steps (More on this later).